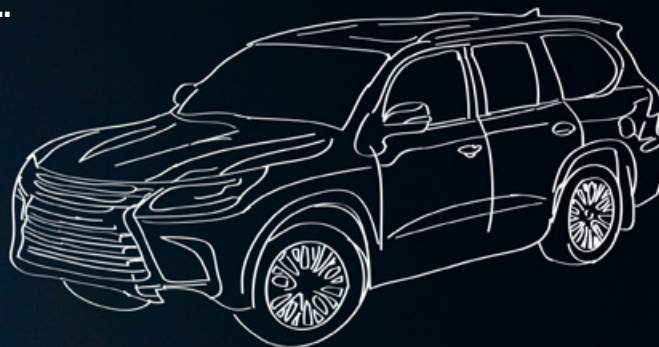


# MOTORING TAILORED TO YOUR NEEDS

FOR TODAY, TOMORROW AND THE FUTURE...



**ARVAL**  
BNP PARIBAS GROUP

For the many journeys in life

# Personal Contract Hire

## Your vehicle - on your terms

Personal Contract Hire (PCH) gives you access to a brand new vehicle, for a fixed monthly payment, with a contract length and mileage allowance tailored to your needs. We buy over 40,000 vehicles each year, which mean you can choose from lots of special offers at a price that suits you. Additional services such as maintenance and insured vehicle options can also be added to your lease.

### CUSTOMER MAINTAINED PCH, INCLUDES:



THE FINANCE COST OF THE CAR



ROAD FUND LICENCE



DRIVER SUPPORT LINE 24/7

### ARVAL MAINTAINED PCH, INCLUDES:

All of the above plus...



ALL SERVICE AND MAINTENANCE COSTS



REPLACEMENT TYRES



BREAKDOWN AND RECOVERY

### ARVAL PCH + ARVAL TOTAL CARE, INCLUDES:

All of the above plus...



INSURED VEHICLE



ACCIDENT MANAGEMENT



GLASS AND WINDSCREENS

## How will this benefit me?



### HAVE A NEW CAR

Enjoy a brand new vehicle and take advantage of special offers enabling you to choose a better model or specification.



### A FIXED MONTHLY COST

You know exactly what your monthly rental costs will be.



### CONTRACT FLEXIBILITY

We tailor the length of the contract to suit your needs from 24 to 48 months.



### LOWER FINANCE COSTS

Arval's buying power allows us to access considerable discounts.



### FREEDOM OF CHOICE

Choose from a wide range of makes and models.



### RELIABILITY AND SAFETY

For safety and peace of mind add our guaranteed maintenance option.



### NO RISK OF DEPRECIATION

At the end of the contract, you hand the vehicle back to us. You will only be responsible for returning the car in a good condition in line with BVRLA guide lines and within the contractual mileage.



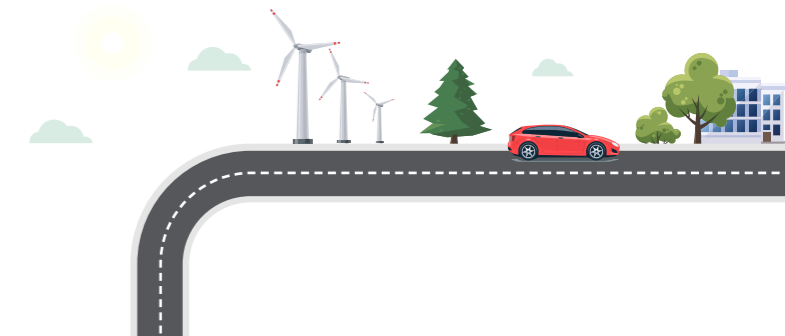
### NO BENEFIT-IN-KIND

Due the agreement being a personal contract, there is no benefit in kind unlike a typical company car.



## What you need to consider:

- What car do you want?** We have links with all manufacturers and an extensive range of new vehicles. We have some great special offers available through your Broker who will be happy to talk you through any options.
- Will the vehicle be suitable for your needs over the term of the lease?** Exiting an agreement will incur additional costs so you should ensure this is right for you.
- How many miles will you do over the contract term?** This is used to set the rental therefore you don't want to pay for more miles than you need, but you should also not underestimate the mileage or you could end up paying additional mileage costs at the end of the contract.
- Taking care of your vehicle.** You must take care of your vehicle and ensure it is fully legal and roadworthy when you return it. If you hand the vehicle back with any damage you could be charged for the repair of it.
- Will you benefit from a maintenance or insured vehicle option?** These can be included within your monthly payment. Otherwise you will be liable for sourcing these.
- It is your responsibility** to make sure the vehicle is maintained in accordance with the manufacturer's recommendations throughout your contract.



**Arval UK Limited** (Whitehill House, Windmill Hill, Swindon, SN5 6PE. Registration number 1073098. VAT Registration GB 202 1441 76) is authorised and regulated by the Financial Conduct Authority



**ARVAL**  
BNP PARIBAS GROUP

**For the many journeys in life**